

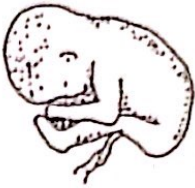
Name _____

Date _____

PREGNANCY AND CHILDBIRTH STAGES (SE-19)

DIRECTIONS: Number the stages of pregnancy and childbirth in the correct order.

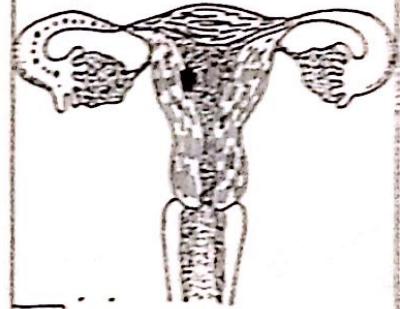
EMBRYO is now called a FETUS.



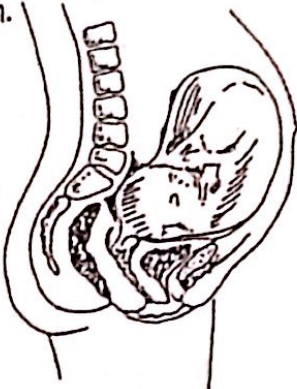
Cells multiply to form the placenta.



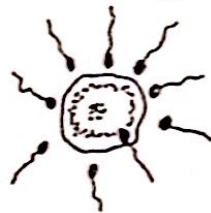
The fertilized egg implants itself.



Pregnancy is full term.



The egg cell and sperm cell join.



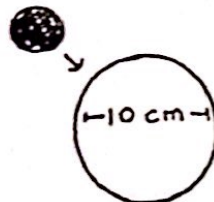
Baby is referred to as an EMBRYO.



Placenta and umbilical cord are pushed out.



Labor: The cervix dilates to 10 cm.



The baby is pushed out.

